

Launch of SFI Moorland Introductory Standard

13th July 2022
Dartmoor



Road Test SFI Moorland



No Additional Stocking Restrictions / Land Management & Compatible with HLS/CS

SFI22 Moorland Assessment

Three Actions

- A. Verify and record soil and vegetation
- B. Evaluate the public goods potential
- C. Identify opportunities for public goods



SFI22 Moorland Standard

Payments:

£10.30/hectare plus £6.15/ha for commons

i.e. 1000 ha common is paid £16,450 per year

For 3 years





Bridging the Gap



**FOUNDATION FOR
COMMON LAND**

A gathering of those with a stake in pastoral commons and their future

Process

NOW

**AUGUST
2022
ONWARDS**

2023

Consider

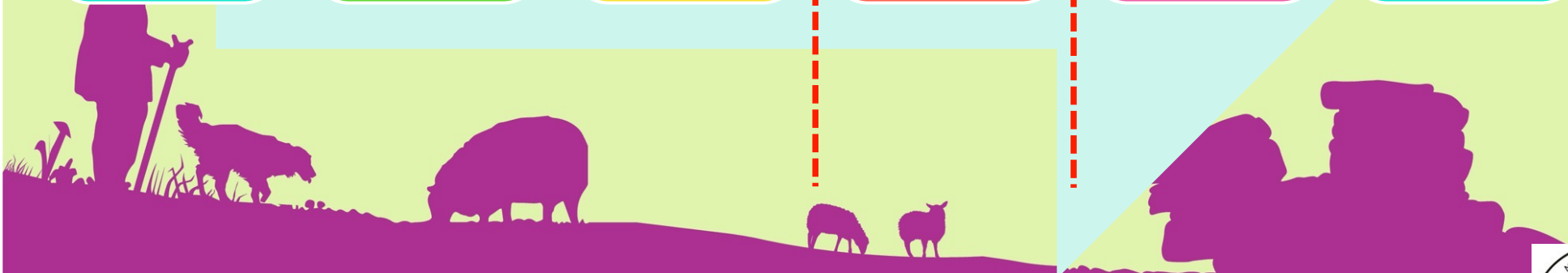
Consult

Document

Apply

Deliver

Share



SFI: What Commons Must Have

Single Entity

• Same as HLS / CS

Main Business
Contact

• Link with RPA

Bank Account

• Payments & Distribution

Enforceable Internal
Agreement

• Single Entity & Members

Sufficient Management
Control

• To Deliver SFI

SFI Moorland: What can we do Now?

Consider

Shall we Apply?

Self-service or contract out

Management Control

Consult

Graziers

Owner

All other Commoners

Document

Internal agreement

Who does what?

How much is paid out?

Who manages the Data?



SFI Moorland: Rolling Start Dates

Application

**Check
Commons
Requirements
are met**

**Wait for
Opening**

**Online 'Simple'
Process**



SFI Moorland: Delivery

Assessment

A: Survey

**B: Identify
Public Goods**

**C: Assess
Future
Opportunities**

Share

**Make Data
Available**

**Discuss
Options**



SFI22 Moorland

A. Verify and record soil types, incl. peatland and vegetation

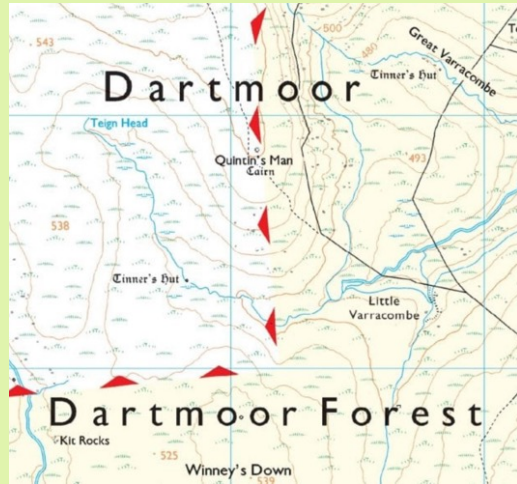
- **1 Recording every 10 ha each Year**
- **Measure Wetness & Depth of Soil**
- **Photograph Vegetation**
- **Record Vegetation Condition**

Undertake Annually for 3 years



SFI22 Moorland

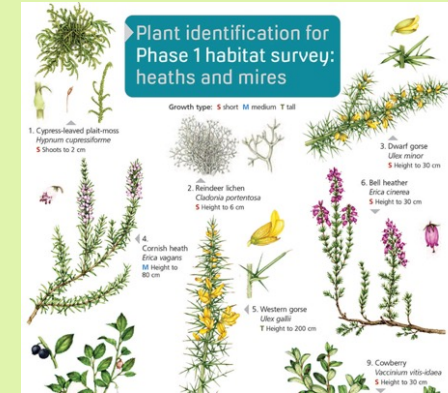
Tools for Collecting Data



A Map



Smart Phone

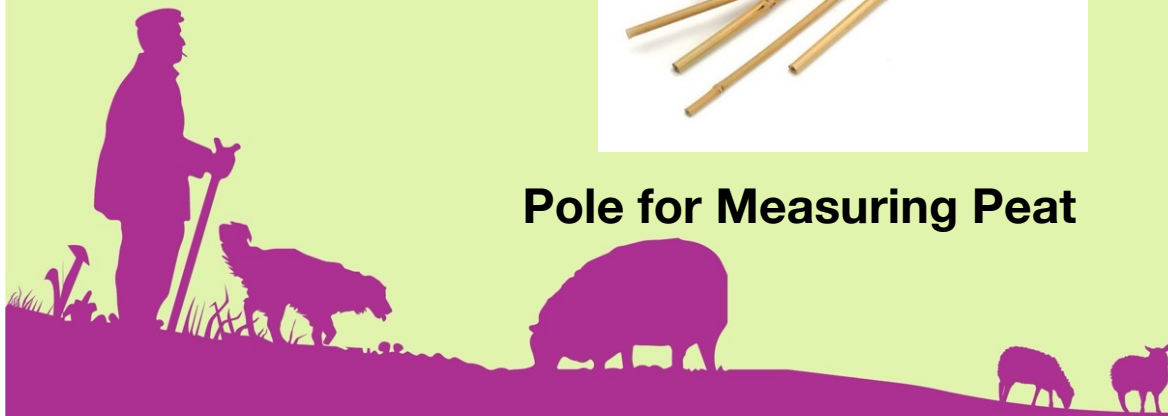


Plant ID Sheet



Pole for Measuring Peat

Recording Form		SFI Introductory Moorland Standard: Moorland Recording Form	
See 'How to do the survey' guidance for details and further information		Holding name:	Address/SBI:
Opportunities Key: (R) = opportunity to restore (E) = opportunity to enhance (A) = already providing public good		Survey year:	Date(s):
		Sample no (enter in columns to right):	
Do First: Peat depth		Grid ref. (optional - enter in columns to right):	
		Peat - deep greater than 40cm	
		Peat - shallow 5 to 40cm	
		Non-peat less than 5cm	
		10ha unsafe	
Soil type	Measure and Objective	Choose closest matches from options below:	
All soil types	Ground cover (Keep carbon)	Large patches of bare peat or soil (R)	
		Small patches of bare ground amongst thin or newly established vegetation (E)	
		No obvious patches of bare ground (A)	
	Extent of erosion (Keep water clean)	Large patches of actively eroding bare peat or soil (R)	
		Obvious patches of bare peat or soil (E)	
		No obvious areas of bare ground or erosion (A)	
	Roughness of ground surface including below any canopy of shrubs or scrub (Slow the flow)	Smooth grass, bare ground or carpet moss (incl. below any canopy of shrubs or scrub) (R)	
		No or sparse bare ground and at least occasional moss hummocks or tussocks (E)	
		Frequent moss hummocks, tussocks or bracken (A)	



SFI22 Moorland

B. Evaluate the public goods potential and condition of the moorland



SFI22 Moorland

Collating Data for your Common: The Land App

The screenshot displays the 'Land App' interface. On the left, there is a sidebar with the following sections:

- Boundaries**: Three buttons for 'Pick from Land Registry', 'Import from Rural Payments Agency', and 'Import from file'.
- Land Registry Parcels**: A list of data layers including 'SBI 107346992 - Land Covers' and 'SBI 107346992 - Land Parcels', each with a lock icon and a menu icon.
- Projects**: A '+ Create Project' button and a list item 'SFI2022 Trial-Dartmoor' with a refresh icon and a menu icon.

The main map area shows a topographic map of Dartmoor with red boundary lines overlaid. A 'Draw' button is visible at the top left of the map. The map includes labels for locations like Okehampton, Tavistock, Princetown, Chagford, and Callington, as well as roads such as A388, A30, A382, A390, and A386. The map also features numerous small red triangles and orange squares scattered across the terrain.

SFI22 Moorland

C. Identify opportunities to maintain or enhance public goods

Opportunities to maintain, enhance and restore public goods on peat soils

Public good:	Keep carbon	Capture carbon	Slow the flow	Keep water clean	Conserve peatland plants	Potential opportunity	Comments - re: (free text or sel
Assessment of public good:	Potential to enhance public goods	Potential to enhance public goods	Potential to restore public goods	Potential to enhance public goods	Potential to enhance public goods		
OPPORTUNITIES WHERE MOORLAND IS: ALREADY PROVIDING PUBLIC GOODS							
Continue to assess public goods and adjust management to maintain and enhance public goods	✓	✓	✓	✓	✓		
Periodically review livestock numbers and grazing periods and adapt grazing levels to maintain abundant peatland plants	✓	✓	✓	✓	✓		
Maintain grazing with suitable upland breeds, which roam widely over moorland and maintain a varied vegetation structure with little need for intervention or supplementary feeding	✓	✓	✓		✓		
If you do not burn vegetation on peat soils, you will protect peat soil, enhance ground surface roughness and encourage peatland plants to grow	✓	✓	✓	✓	✓		
If you do not use vehicles on peat soils, you will protect sensitive peatland vegetation and avoid risk of soil compaction	✓	✓	✓	✓	✓		
Maintain vegetation in good condition where there are priority breeding birds, for example hen harrier, merlin, black grouse, golden plover, curlew, short-eared owl or ring ouzel					✓		
If you do not cut vegetation in sensitive areas, like gully sides and near watercourses, you will maintain surface roughness and protect soil from erosion	✓	✓	✓	✓	✓		
If you do not supplementary feed on peat soils, you will protect peatland vegetation and avoid risk of soil compaction and poaching	✓	✓	✓	✓	✓		
OPPORTUNITIES TO: ENHANCE PUBLIC GOODS							
Review livestock numbers and grazing periods and adapt grazing levels to encourage bog mosses to grow	✓	✓	✓		✓		

Commons SFI22 Governance

- Between Association Officers and Every Beneficiary

INTERNAL AGREEMENT

As SFI22 is only a 3 yr agreement FCL are exploring a simpler contract form of internal agreement

APPLY TO RPA

- Application by Single Entity

DELIVERY OF SFI

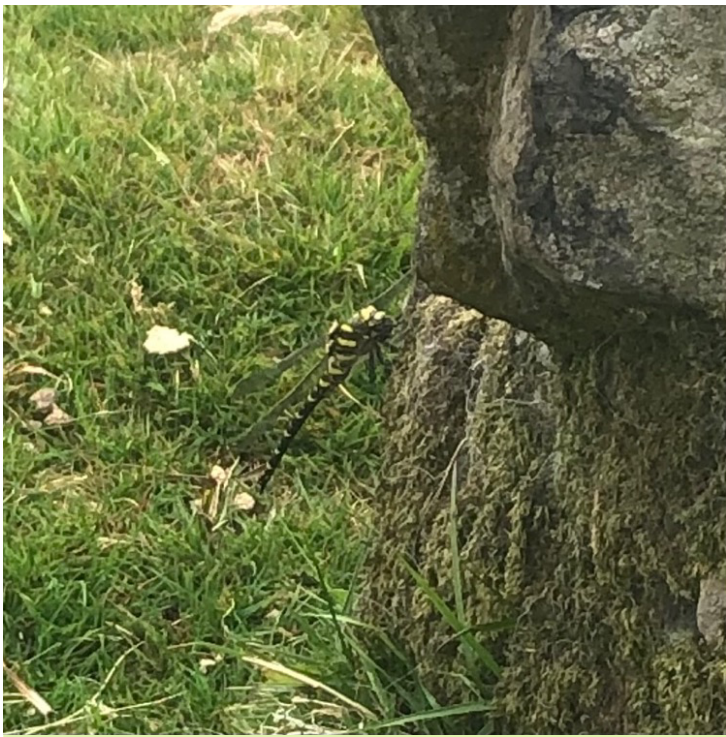
- Organised by Association

DISTRIBUTE PAYMENTS

What you can do NOW

- Create a Live Register from 1965 Register
- Write to all those with Legal Rights informing them of Proposal to enter SFI Moorland
- Consider How you you will undertake the Survey
- Consider How you will split the Surplus Monies
- Choose and Practice with a Mapping Package e.g. Land App
- Collect Baseline Data e.g. Land Parcels, vegetation surveys





Golden-ringed dragonfly on
Peter Tavy Common



FOUNDATION FOR
COMMON LAND

A gathering of those with a stake in pastoral commons and their future

Julia Aglionby

@4CommonLand

www.foundationforcommonland.org.uk

